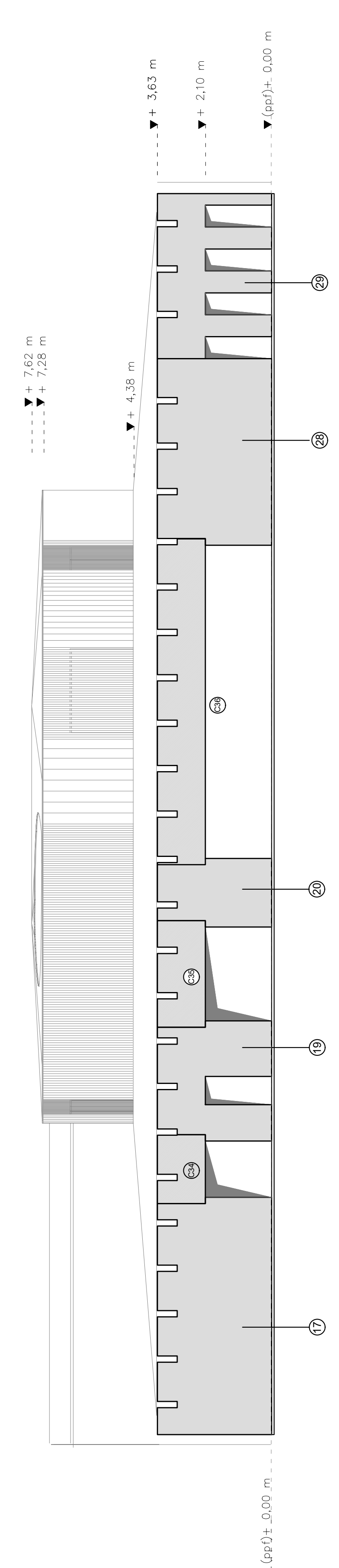
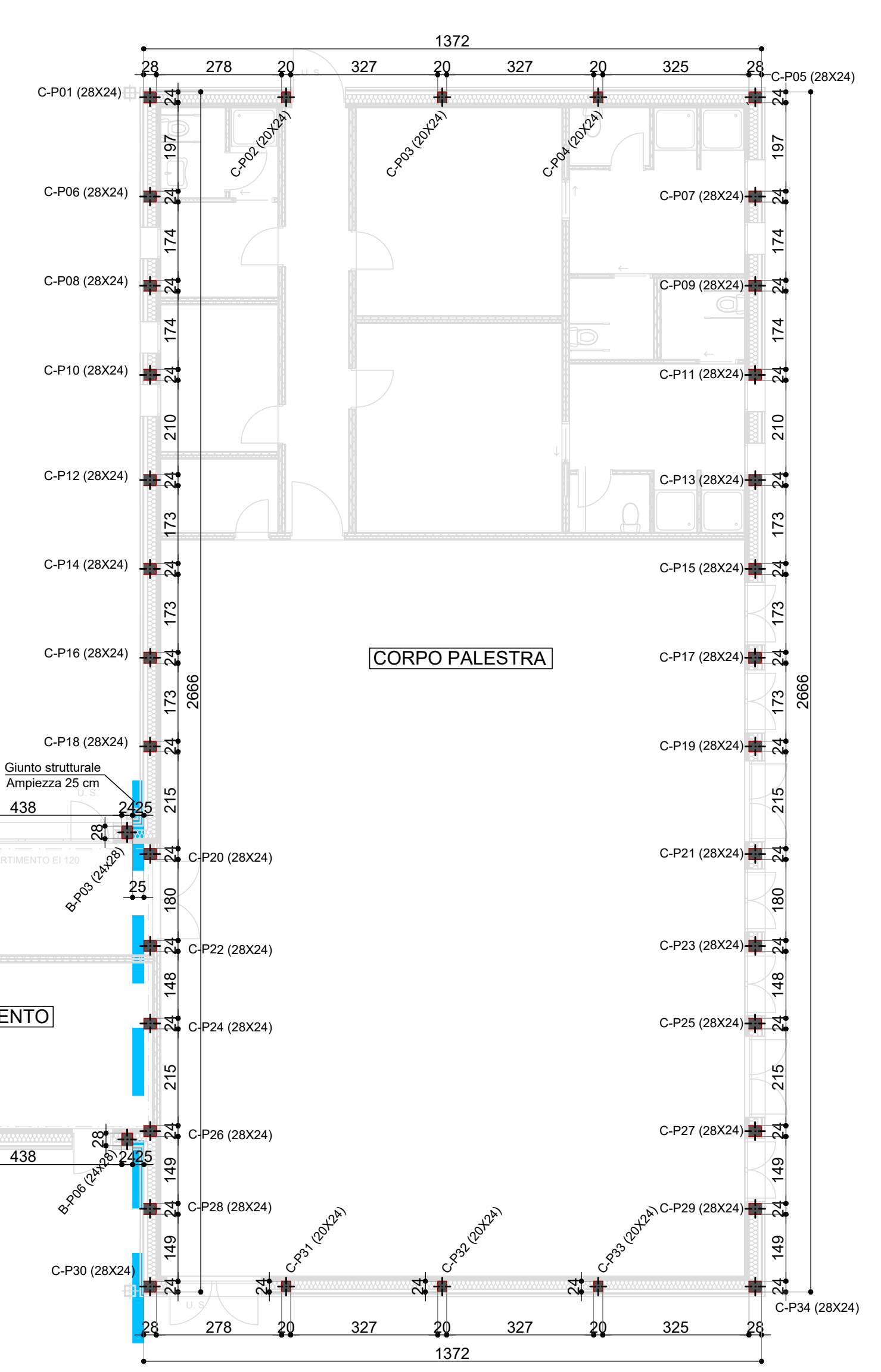
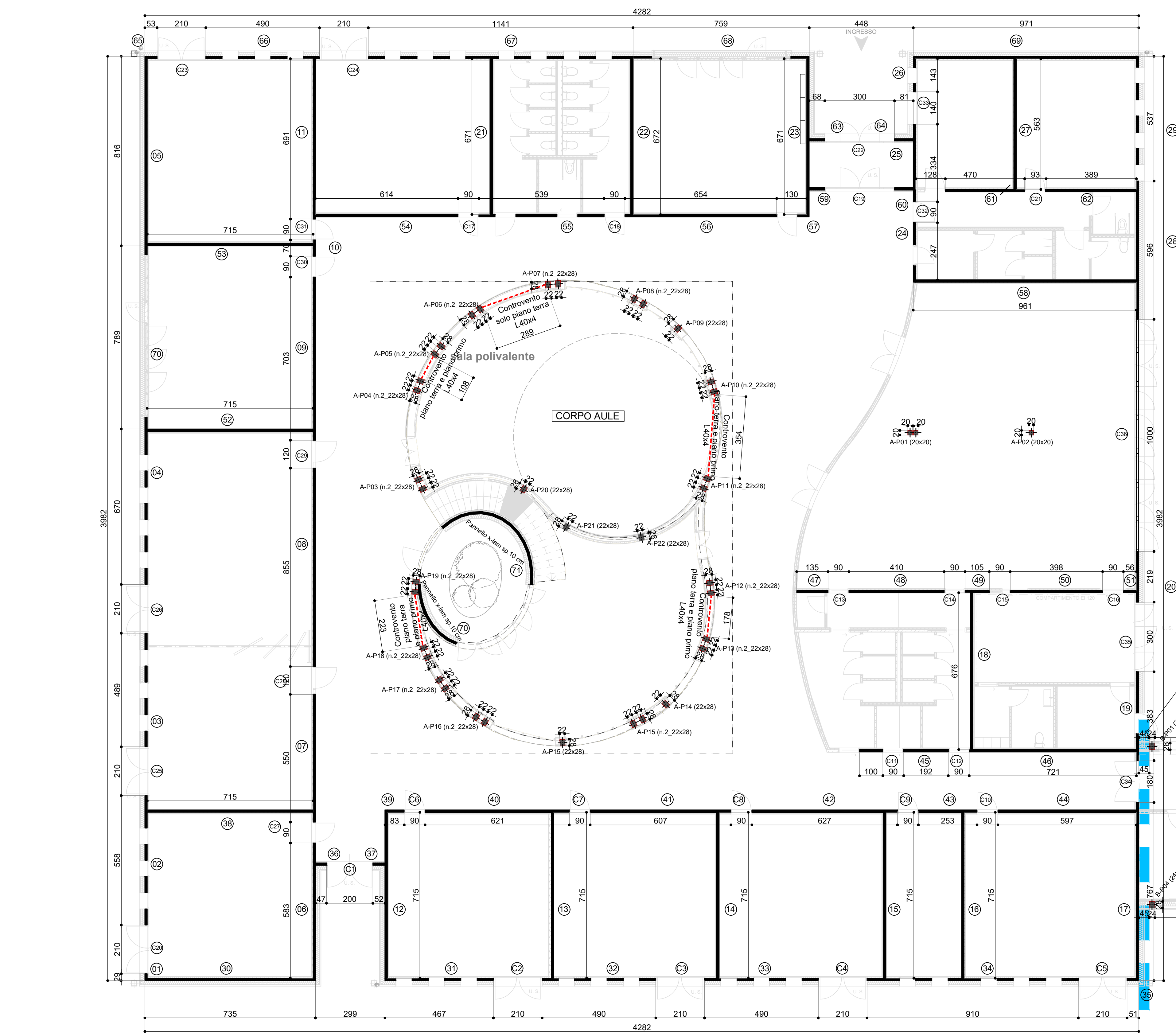
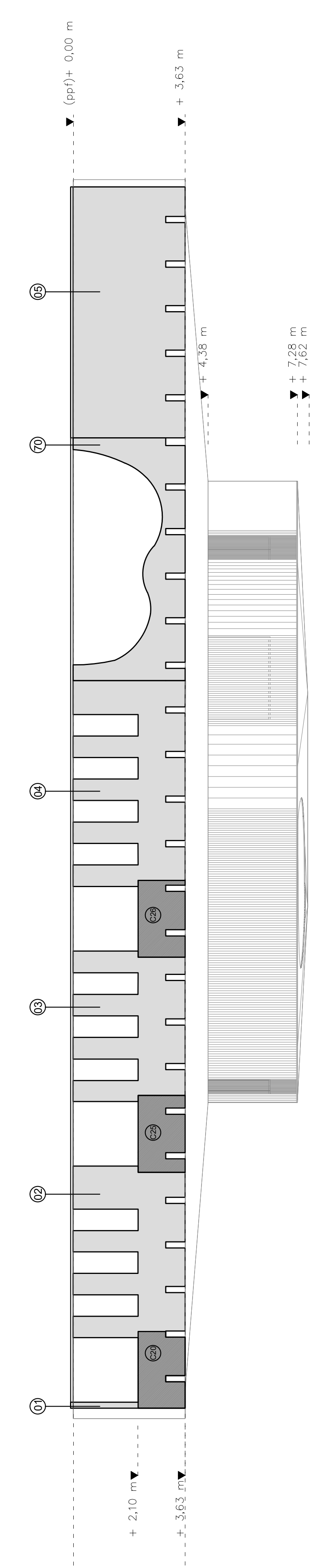


This architectural section drawing illustrates a building facade with multiple levels and structural components. The drawing includes the following elements:

- Levels and Elevation:**
 - Top level: + 2,10 m
 - Second level: + 3,63 m
 - Third level: + 4,38 m
 - Fourth level: + 7,38 m
 - Fifth level: + 7,82 m
 - Bottom level: + 3,35 m
 - Other levels: + 6,30 m and + 7,02 m
- Structural Elements:**
 - Columns: Labeled 65, 66, 67, 68, and 69.
 - Roof: A series of vertical lines representing a pitched roof structure.
 - Walls: A large wall section on the right side of the drawing.
 - Windows: A window unit on the right side of the drawing.
- Annotations:**
 - Dimensions: 4,38 m, 7,38 m, 7,82 m, 3,35 m, 6,30 m, 7,02 m.
 - Notes: (pp) = 2,00 m.

Technical drawing of a square floor slab (Pavimento) showing dimensions and reinforcement details. The slab is 337 cm wide and 340 cm deep. It features a central square area with diagonal reinforcement bars (L40x6) and a central square area with diagonal reinforcement bars (L40x6). The drawing includes a section line 'D' and a detail callout 'Dettaglio 21'.



OPERE IN LEGNO LAMELLARE

MATERIALI:

LEGGI I PANNELLI ABE appartenente alla classe di resistenza GL 28e (si veda UNI EN 14907:2013)

Resistenza a flessione:	$f_{m,Ed} \leq$	28	MPa
Resistenza a trazione - parallela:	$f_{t,Ed} \leq$	19,5	MPa
Resistenza a trazione - perpendicolare:	$f_{t,Ed} \leq$	0,50	MPa
Resistenza a compressione - parallela:	$f_{c,Ed} \leq$	24,0	MPa
Resistenza a compressione - perpendicolare:	$f_{c,Ed} \leq$	2,5	MPa
Resistenza a taglio:	$f_{v,Ed} \leq$	3,5	MPa
Modulo di elasticità - parallelo - medio:	$E_{p,med} \geq$	12,5	kN/mm ²
Modulo di elasticità - parallelo - caratteristico:	$E_{p,k} \geq$	10,0	kN/mm ²
Modulo di elasticità - perpendicolare - medio:	$E_{p,med} \geq$	0,30	kN/mm ²

UTILIZZARE SOLO ELEMENTI IN LEGNO LAMELLARE CONFORMI A UNI EN 14080 E DM 14/01/2002